



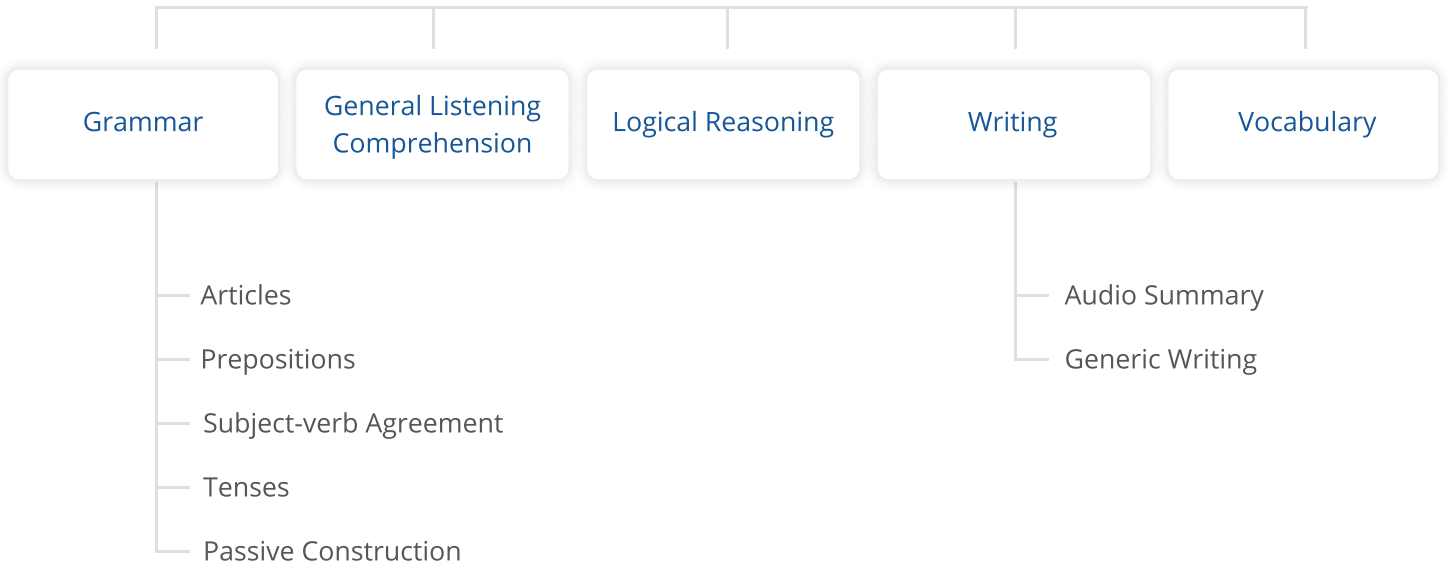
The Recruitment Assessment is a comprehensive test that assesses a candidate’s overall grasp over English grammar, logical reasoning, vocabulary, sentence construction abilities, and listening comprehension skills.

Duration: 90 Minutes

Total Score: 75

Pass Score: 60%

Assessment Sections



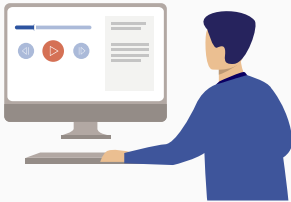
Skills Assessed

Grammar

This section evaluates a candidate’s facility over five grammar topics: articles, prepositions, verb tenses, subject-verb agreement, and passive constructions.

General Listening Comprehension

This section assesses the echoic memory of a candidate. An audio clip will be played and a candidate is expected to answer a handful of questions based on the audio clip.



Logical Reasoning

This section gauges a candidate’s response to a number of mathematical and situational problems.

Vocabulary

This section tests a candidate’s overall grasp over various English words.



Writing

Audio Summary:

This subsection contains a recording of a mock doctor-patient interaction. The candidate taking the test is expected to listen to the conversation and compose a brief summary of the doctor-patient conversation.



Scores are awarded based on the trainee’s ability to grasp the contents and context of the conversation along with the ability to construct grammatically correct sentences

Generic Writing:

This subsection prompts the candidate to write a short essay containing at least three paragraphs on a reflective topic. Scores are awarded based on the candidate’s ability to write in alignment with the topic given and the ability to construct grammatically correct sentences.

